



Publication: Contra Costa Times **Date:** June 11, 2005 **Job #:** 4925P/3188

Coakley Heagerty: Ben Stephenson, Public Relations Coordinator, 1155 N. First St. #201, San Jose, CA 95112

Direct: (408) 793-2393 Fax: (408) 995-0600 bstephenson@coakley-heagerty.com

The Lakes in Discovery Bay releases first models this weekend

THE LAKES CONSORTIUM

DISCOVERY BAY — This weekend, Fiore by Clyde Miles Construction and Sterling Pointe by Meritage Homes, two neighborhoods at The Lakes in Discovery Bay, will be hosting the prestigious new home community's first model releases.

"With Northern California's famed spring and summer weather now here, there is no better time to experience owning a home at this resort-like community that surrounds a 14-acre man made lake," said Dana Johnson, community sales manager at Fiore. "The Lakes reflects the best of California living so we're encouraging homebuyers to not hesitate in visiting our sales offices as we're expecting heavy interest in these beautiful model homes."

Already featuring spacious master suites, tremendously appointed kitchens and desirable living spaces, Fiore's four elegant models offer buyers all included furnishings, audio/video equipment, window treatments and wall coverings, in addition to upgraded flooring, kitchen countertops, front yard landscaping and professionally designed rear yard landscaping. Prices for the model homes start in the mid-\$600,000s.

In approximately 1,870 square feet, La Magnolia offers three bedrooms, two baths and a den in a versatile single-story plan. The home's spacious living room lies adjacent to an island kitchen while the elegant master suite is tucked away at the rear of the home, allowing the utmost in comfort and privacy.

La Rosa offers approximately 2,594 square feet with five bedrooms, three baths and a library. Four of the home's bedrooms are located on the second floor with one remaining on the first, perfect for visiting family and guests.

A four-bedroom, two and one-half bath home of approximately 3,088 square feet, La Orchidea features a convenient and spacious

downstairs master suite, in addition to an upstairs bonus room and study. The home's connected living and dining areas are presented upon entry to the home and the spacious family room is separated from the island kitchen by a spacious nook.

Il Tulipano, the largest floor plan available at Fiore, offers approximately 3,243 square feet with five bedrooms and three baths. A unique nook separates Il Tulipano's island kitchen from the family room while the home's formal dining area is adjacent to a butler's pantry and opens to an interior courtyard.

The four fully furnished, highly-upgraded models at Sterling Pointe feature up to approximately 4,724 square feet with six bedrooms, top of the line appliances, lighting and plumbing fixtures as well as wood and natural stone flooring.

Sterling Pointe's Bonita floor plan presents approximately 2,422 square feet with three bedrooms, two baths and a den. The single story plan features a great room that lies adjacent to the home's kitchen, breakfast nook and dining area.

Featuring approximately 2,730 square feet, the Cabrillo offers buyers three bedrooms, three baths and a den. The single story residence's connected living and dining areas are presented upon entry to the home while the spacious master bedroom is located at the rear, allowing for increased privacy and comfort.

A spacious three-bedroom, two and one-half bath home, The Loma also offers a den in its approximately 2,955 square feet. The two-story floor plan features a two-car plus tandem garage and upstairs tech center.

Gibraltar features five bedrooms, three and one-half baths and a den in approximately 3,337 square feet. The home's family room, complete with media niche and fireplace, is separated from the island kitchen by a useful nook.

Sterling Pointe's Reyes floor plan presents approximately 3,640

square feet with four bedrooms, two and one-half baths and a game room. A useful downstairs master suite highlights this two-story residence.

At approximately 4,690 square feet, the Montara represents the largest floor plan available at Sterling Pointe. The six-bedroom, four and one-half bath home features an upstairs bonus room and a downstairs master suite.

Four of Northern California's most experienced and respected homebuilders have come together to design and build The Lakes. Meritage Homes, Clyde Miles Construction, Kiper Homes and The Hofmann Company are well known for their exceptional quality craftsmanship and attention to detail, as well as their award winning architectural styles.

Clyde Miles Construction

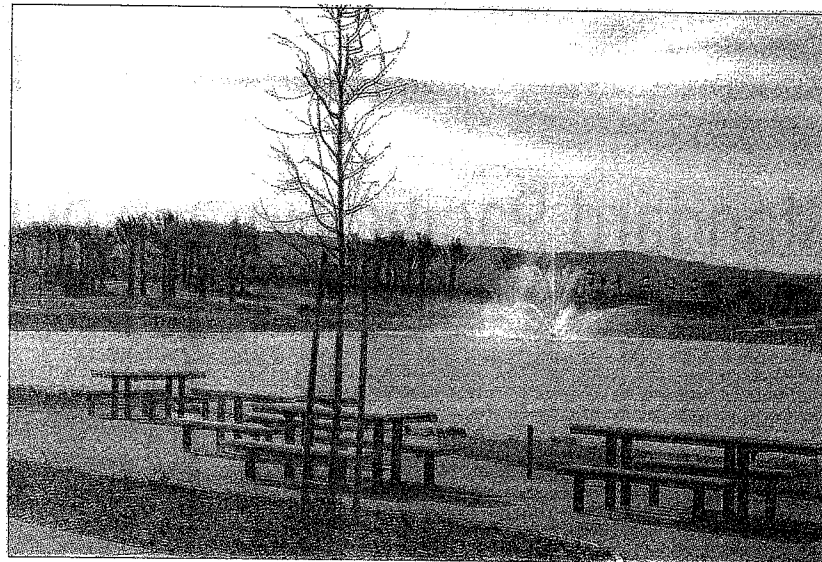
Originally a framing company, Clyde Miles Construction has since devoted its talents to designing luxury homes throughout the San Francisco Bay Area. With Clyde Miles placing his stamp of approval on each and every home, the company has built a

reputation for creative floor plan designs and quality construction that meets, if not exceeds, the expectations of every homeowner.

Fiore by Clyde Miles Construction presents four unique floor plans — La Magnolia, La Orchidea, La Rosa and Il Tulipano — ranging in size from approximately 1,870 to 3,347 square feet of living space. Homes offer three to six bedrooms, two to three baths and two- to three-car garages.

Kiper Homes

Classic design and elegance are the home buying hallmarks of Kiper Homes. For more than 30 years, exceptional workmanship and attention to detail have been the foundation of this builder's pledge to meet homeowners' expectations from start to finish. The result is outstanding quality at prices families



THE LAKES CONSORTIUM

Plenty of recreational opportunities are available at the Lakes.

can afford.

The Escape at The Lakes presents homebuyers with four floor plans ranging from approximately 2,609 to 3,732 square feet with up to seven bedrooms. Each floor plan has its own unique architectural design with options and upgrades that are nothing short of spectacular. Discover for yourself The Escape to the extraordinary.

Meritage Homes

With precision, hard work and sensitivity, Meritage Homes strives to provide great American dream homes with the very best in customer satisfaction.

Sterling Pointe is the builder's latest community at The Lakes, offering six all new exciting floor plans tailored for families with an affinity for the outdoor lifestyle. These new homes range in size from approximately 2,400 to 4,700 square feet.

Sterling Pointe's homes offer an extra-large garage with plenty of storage space for boats or any number of vehicles. Residences also feature bonus rooms, home offices and large spa-like soaking tubs in the master baths.

Meritage Homes offers many customizing opportunities for homebuyers to truly make this home their dream home.

The Hofmann Company

Praised for its pioneering concept of Discovery Bay over 20 years ago, The Hofmann Company has two communities at The Lakes — Horizons and Reflections — showcasing its commitment to creative home designs that keep pace with the needs and demands of today's buyers.

Beginning in the mid-\$500,000s, Horizons at The Lakes offers four unique with elegant three to four-bedroom homes ranging in size

from approximately 1,885 to 3,305 square feet. Homeowners can add their own personal touch with an optional great room, den, loft, additional bedroom, dining room, media room or super family room.

Starting in the high \$500,000's, Reflections at The Lakes provides eight luxurious three- to five-bedroom residences ranging from approximately 2,044 to 4,109 square feet. Homeowners have the option to add an additional bedroom, retreat or den.

To visit The Lakes, take Interstate 880 to I-580, exit at Vasco Road north, turn right at Camino Diablo Road, then left at Byron Highway and right onto Highway 4. From Highway 4, take Bixler Road north and turn right at Fallman Boulevard.

For more information regarding The Lakes communities, please visit www.DiscoverTheLakes.com or call 800-760-LAKE.